

Examples of Internship Locations

- Government Agencies
- Courts/Justice Systems
- Hospitals/Healthcare
- Business/Advertising
- Childcare/Preschool
- Camp Counselor
- Mental Health Facilities
- Detention Centers
- Summer Youth Programs
- Many more depending on your career goals!



NOTICE



PSY 382 is a web-based course through Virtual University. Your internship site will be very demanding. We do not encourage students to take additional summer courses. If you feel that you need to take a summer course, please see a PSY advisor.

**APPLICATION IS ON-LINE
WWW.PSYCHOLOGY.MSU.EDU**

You will find it on the Psychology Undergraduate website under “Get Involved”.

For more information contact:

**Instructor:
Lindsay Spitzley
spitzlin@msu.edu**

Department of Psychology

316 Physics Road, Room 100
Psychology Building
East Lansing, MI 48824

Phone: 517-353-7271
Fax: 517-355-5139

Website: <http://psychology.msu.edu>

DEPARTMENT OF PSYCHOLOGY



**General PSY
Summer
Internship
Program
(PSY 382)**

**Information for
Prospective Students**

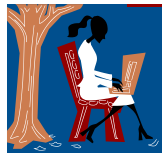
**MICHIGAN STATE
UNIVERSITY**

What is PSY 382?

Purpose of the course:



Whether a student intends to start a career after graduation or attend graduate school, it is imperative that the student gain experience to make him/her more marketable in these arenas. This internship is for students who desire experience in an area related to the field of Psychology. This can be very broad because Psychology touches on many fields, but all experiences need to be approved in advance by the department to make sure that they follow in line with the goals of the program.



Full Summer Semester (382) On-line

- All correspondence with instructor is on-line. Students do not need to reside in the East Lansing area for the internship.
- The credits earned for this internship are graded with the Pass/Fail system (not numerical).

GOALS:

1. Provide student with an opportunity to test out a **career** of interest.
2. Create a student **network** that will help foster contacts through LinkedIn.
3. Gain **experience** to strengthen resume and confirm a potential career.
4. Establish **relationships** with employers and key contacts.
5. Find out **early** if the field is a good match.
6. Earn **credit** to help toward completion of the Psychology Degree.
7. **Research** career goals and interests.
8. Apply what the student has **learned** in the classroom to make the experience more real.



Credits and Grading

PSY 382 is a “variable credit” web based course, with students taking a minimum of 6 and a maximum of 12 credits. For each credit taken, the internship requires 3 hours of work. In addition to working at the placement, all students will receive ongoing supervision to ensure the learning goals. Students will be required to complete written assignments through weekly modules and to communicate with the instructor and their classmates. Modules topics will vary. Some topics will be directly related to the internship and others will be beneficial for future career preparation.

